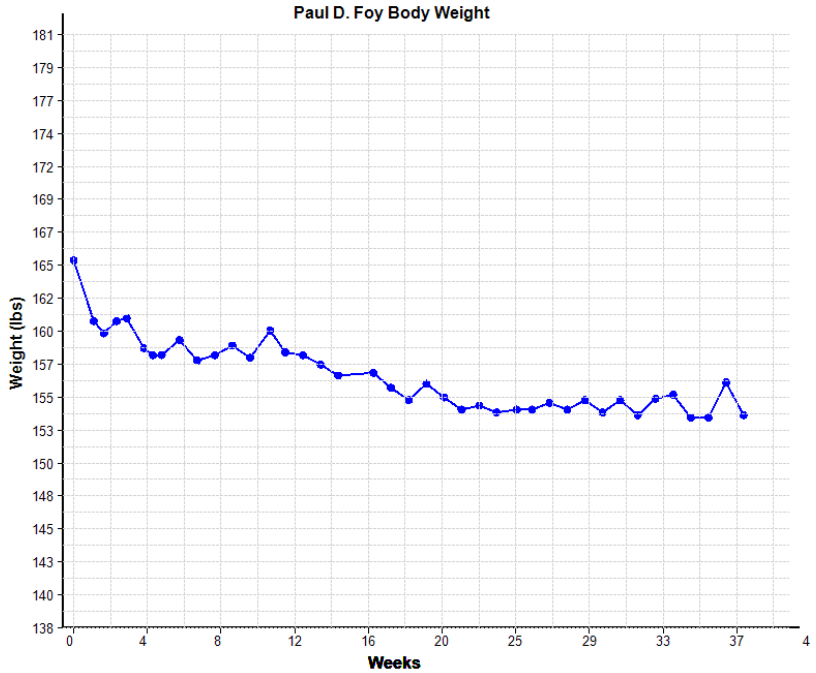


Contents

1	INTRODUCTION.....	2
2	PRE-REQUISITES.....	3
3	INSTALLATION/REMOVAL	4
4	USE.....	6
4.1	SETUP	6
4.2	DATA	8
4.3	GRAPH	10
4.4	PRINT	11

1 Introduction

This is a manual for the installation and use of the application 'GraphPlotter'. The program is a simple Windows application, for plotting a series of data, of various formats, and creating a file of the output. A typical chart would look like:

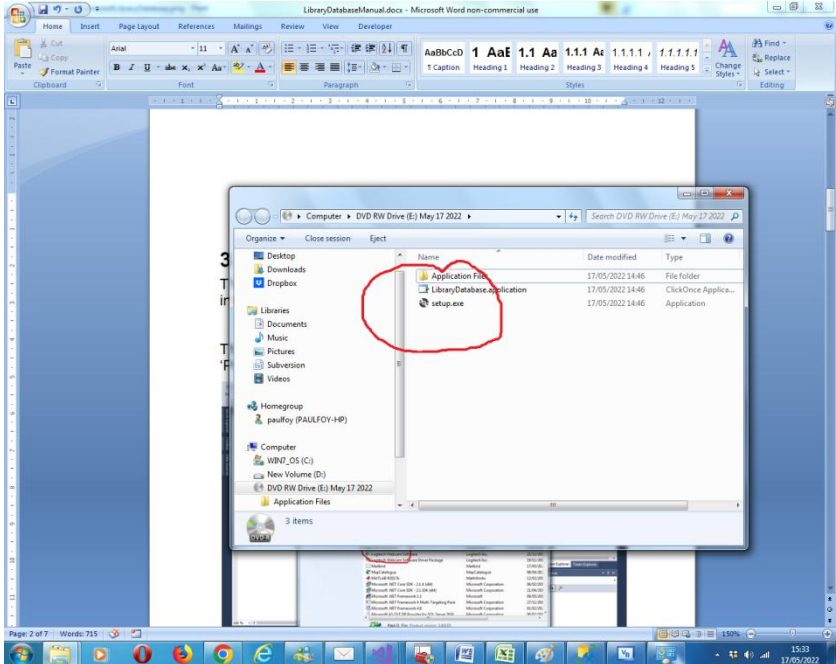


2 Pre-requisites.

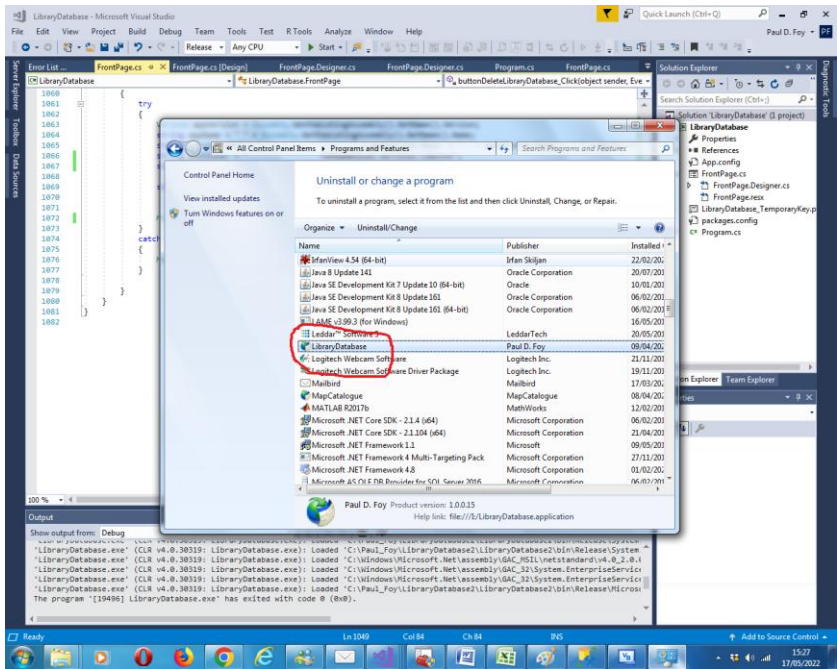
1. A PC running Windows 7 or above.
2. A USB stick or optical drive containing the program setup files, together with this manual.

3 Installation/Removal

The program is installed by inserting the supplied stick or disc into the PC and running the 'setup.exe' program on it.



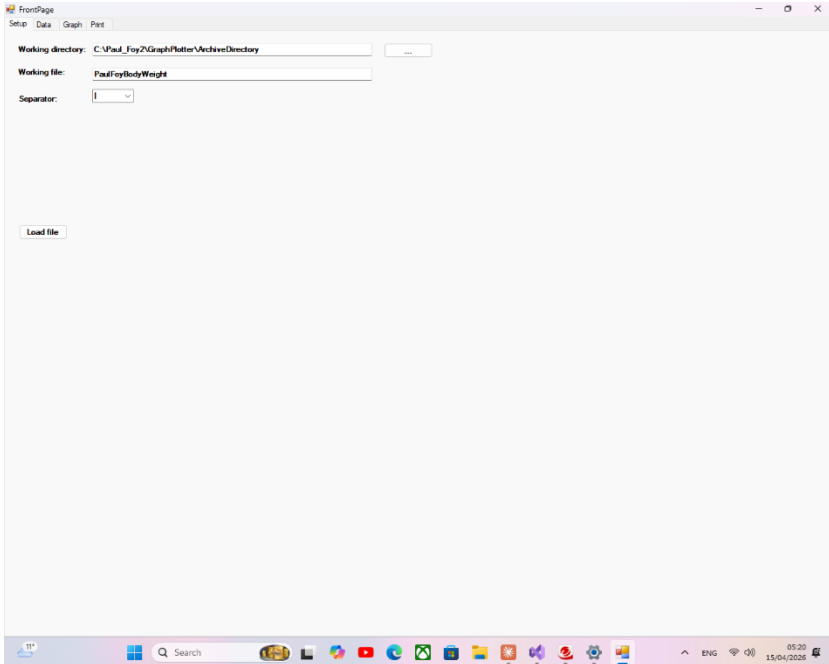
The program can be removed from the PC, by using the 'Program & Features' menu from within Control Panel.



4 Use

The application has 4 tabs:

4.1 Setup



This tab initialises the names and directories and the settings.

Working Directory: the directory where all files are loaded from or saved to.

Working file: the name of the text file to load. This is used for the text file name of the archive file which is saved on program quit and loaded on program start. The contents of this text file populate the entries in the Flex Grid on the Data tab.

Separator: The accompanying comboBox provides the character which is used to separate the data in the saved or loaded .txt file. There is one field for each row of the Flex Grid. Possible values for separator are '|', ',' and ';'.

Load file: The file in the above text box is loaded into memory from its archived text file. If no such file exists an empty flex data grid is created. If you do not explicitly load a file, the last loaded file (as specified in the above text box) is loaded into the Flex Grid on start-up. This button is used for switching between files.

4.2 Data

The screenshot shows the 'FrontPage' application window with a menu bar (Setup, Data, Graph, Print) and a data grid. The grid has columns for Index, Data1, Data2, Data3, and Selected. Below the grid are controls for X Axis Type (DateTime), Date Time Units (Weeks), X Axis Index (2,3), and Y Axis Index (1).

Index	Data1	Data2	Data3	Selected
1	155.45	12-07-2025	15:20	<input type="checkbox"/>
2	151.0	20-07-2025	14:25	<input type="checkbox"/>
3	150.1	24-07-2025	15:15	<input type="checkbox"/>
4	151.0	29-07-2025	16:35	<input type="checkbox"/>
5	151.2	02-08-2025	16:00	<input type="checkbox"/>
6	159.0	09-08-2025	14:25	<input type="checkbox"/>
7	158.5	13-08-2025	02:50	<input type="checkbox"/>
8	158.5	16-08-2025	13:55	<input type="checkbox"/>
9	159.6	23-08-2025	16:00	<input type="checkbox"/>
10	158.1	30-08-2025	16:00	<input type="checkbox"/>
11	158.5	06-09-2025	16:30	<input type="checkbox"/>
12	159.2	13-09-2025	15:45	<input type="checkbox"/>
13	158.3	20-09-2025	17:00	<input type="checkbox"/>
14	160.3	28-09-2025	16:15	<input type="checkbox"/>

X Axis Type: Date Time Units:
X Axis Index:
Y Axis Index:

The Flex Grid on this tab is used to load data into the application. An index column and up to 3 data fields are permitted. The contents of the data fields depend on the type of graph to be plotted as described subsequently and as indicated by the controls below the data grid.

X Axis Type: This gives the options for the graph type:

DateTime: The X ordinate represents a time. One data column must represent a date in the format 'dd:mm:yyyy'. One column must represent the time in the format 'hh:mm'. Time values must be monotonically increasing, from the first reading, the

start time. Then the X Axis of the graph is a number with units as provided by **Date Time Units** and the adjacent comboBox. These can be Years, Months, Weeks, Days, Minutes or Seconds.

Date: The X ordinate represents a time. One data column must represent a date in the previous format. A time of 00:00 is implicitly assumed. Time values must be monotonically increasing from the first reading. The X-axis and its units are as in the previous case.

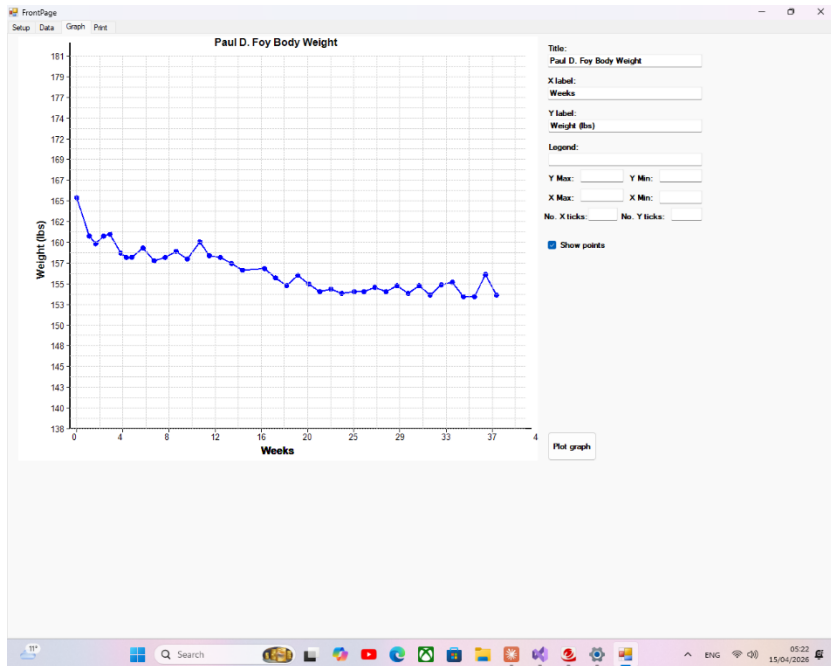
Value: One data column represents the X-ordinate. Another data column represents the Y-ordinate.

Index: The first column represents the index number which must be monotonically increasing from 1. That is 1,2,3,4, ... Another data column represents the Y-ordinate.

X Axis Index: This represents the index or indices (0 based) of the data representing the X-ordinate. For the graph type *DateTime* this is two numbers separated by a ',' , since two columns are used to hold the X-ordinate in this case. For all other graph types one number must be provided.

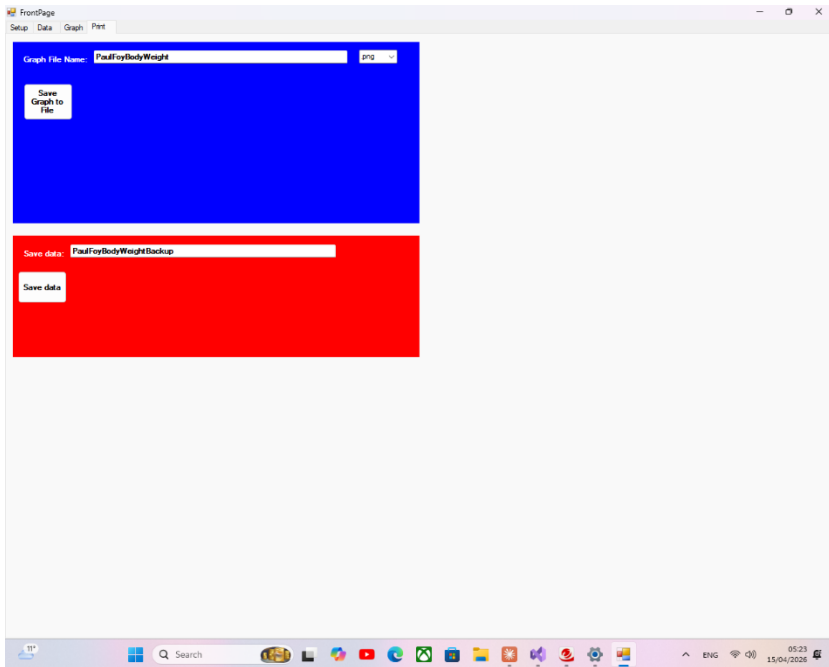
Y Axis Index. The index (0 based) of the column of data representing the Y-ordinate.

4.3 Graph



Use this tab and the button **Plot graph**, to plot a graph of the type selected. Using the text boxes adjacent to the right it is possible to add a label for the **Title**, X axis (**X label**), Y axis (**Y label**) and the **Legend**. The X and Y range of the data can be selected as can the number of X and Y ticks for the axes. The points plotted can be indicated by selecting the **Show points** check box.

4.4 Print



The upper panel allows you to create a file of the graph in the 'Graph' tab, as either a .png, .jpg or .bmp file. This can then be printed. The name of the file is as provided in the text box.

The lower panel creates a text file listing the entries in the flex grid. The name of the file is as provided in the text box.

Paul D. Foy
Mathematical Services

April 2026