

1 Introduction

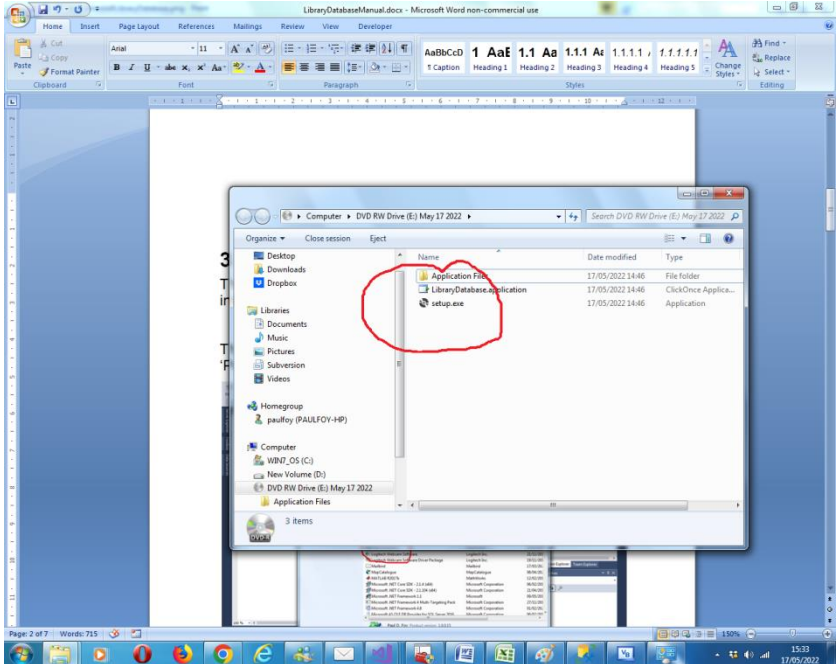
This is a manual for the installation and use of the database application 'LibraryDatabase'. The program is a Windows application, for creating and searching a modestly sized database, such as would be found in a small library or collection.

2 Pre-requisites.

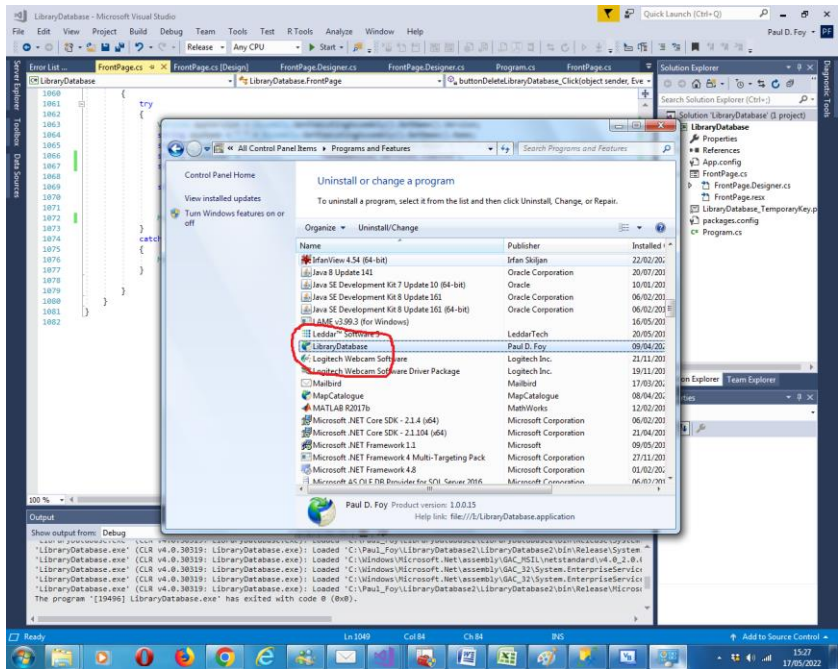
1. A PC running Windows 7 or above.
2. A USB stick or optical drive containing the program setup files, together with this manual (available online).

3 Installation/Removal

The program is installed by inserting the supplied stick or disc into the PC and running the 'setup.exe' program on it.



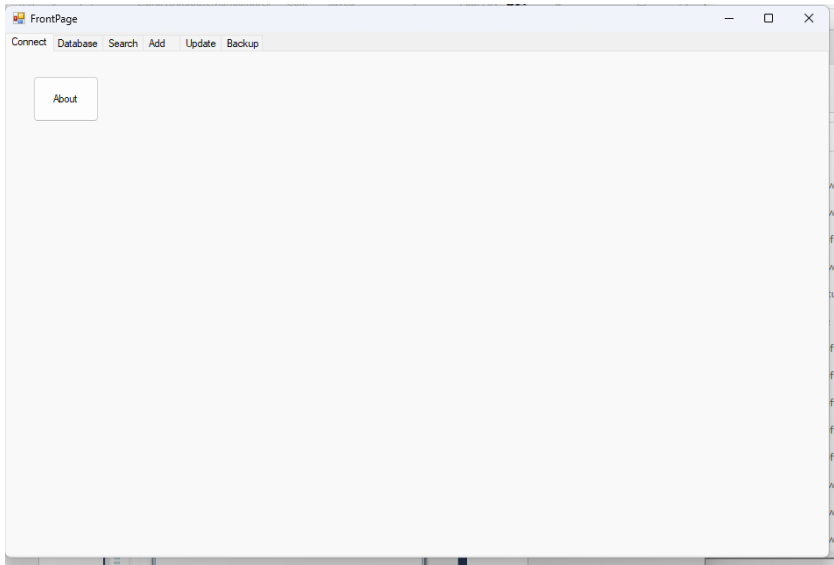
The program can be removed from the PC, by using the 'Program & Features' menu from within Control Panel.



4 Use

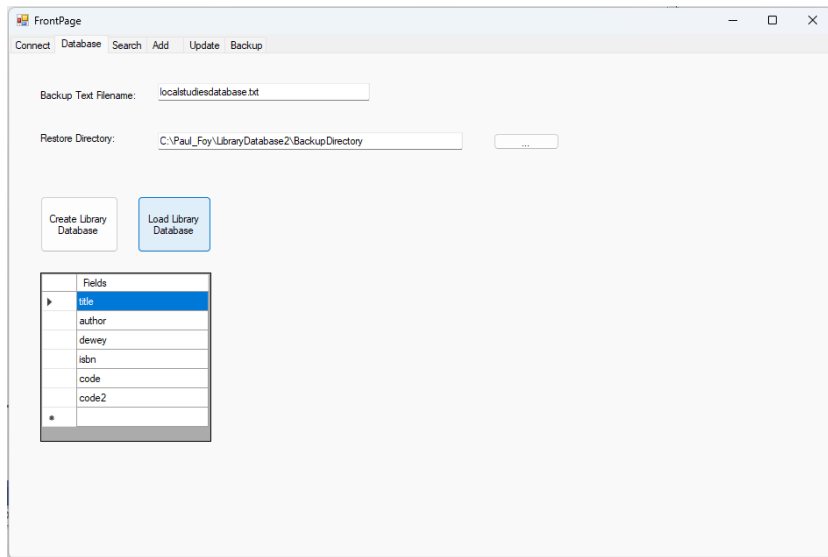
The application has 6 tabs:

4.1 Connect



It is also possible to see information about the software using the 'About' button.

4.2 Database

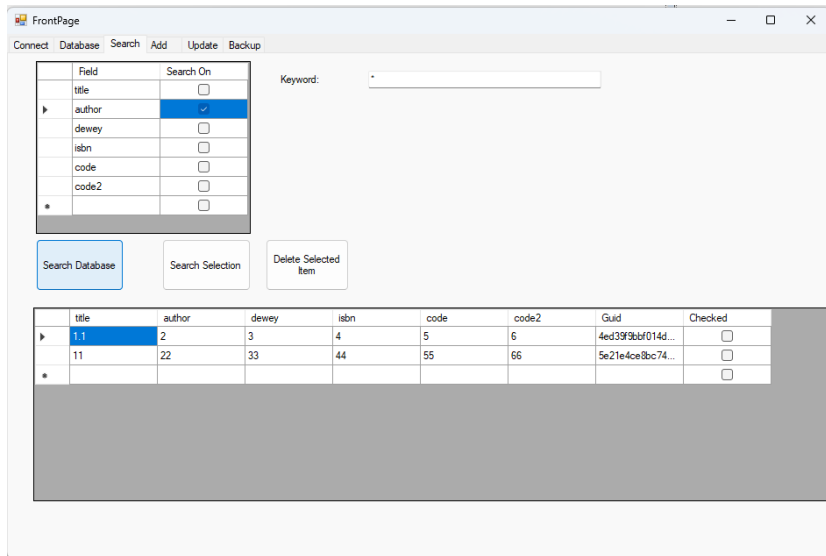


This tab allows you to create and load a new database or load a previously created one. The last choice made is automatically presented to you. In the latter case you must supply a filename, and a directory where these are stored.

The fields are specified in the flex grid, which are of the user's choice.

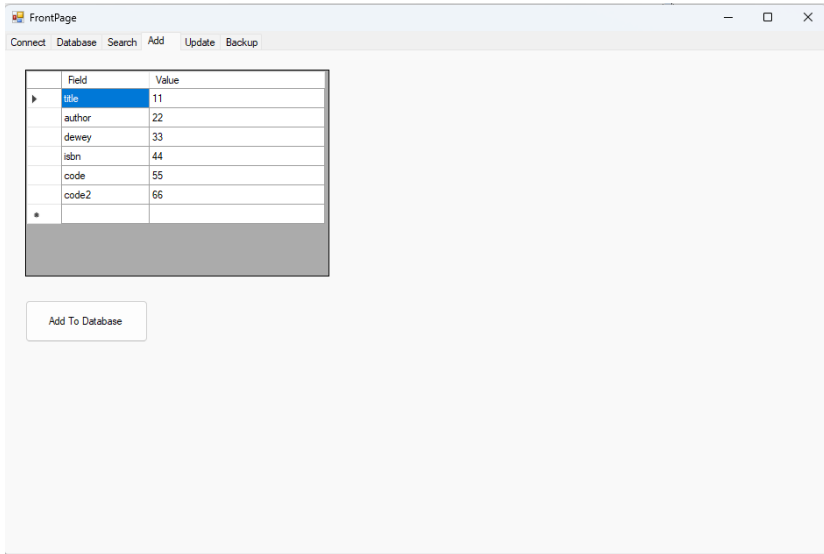
A GUID is supplied by the application and is the final field and cannot be selected by the user. Its sole purpose is to maintain the unique identity of each record of the table. This permits, for example the inclusion of two or more copies of the same book, which are identical in all respects (i.e. other fields) apart from the GUID.

4.3 Search



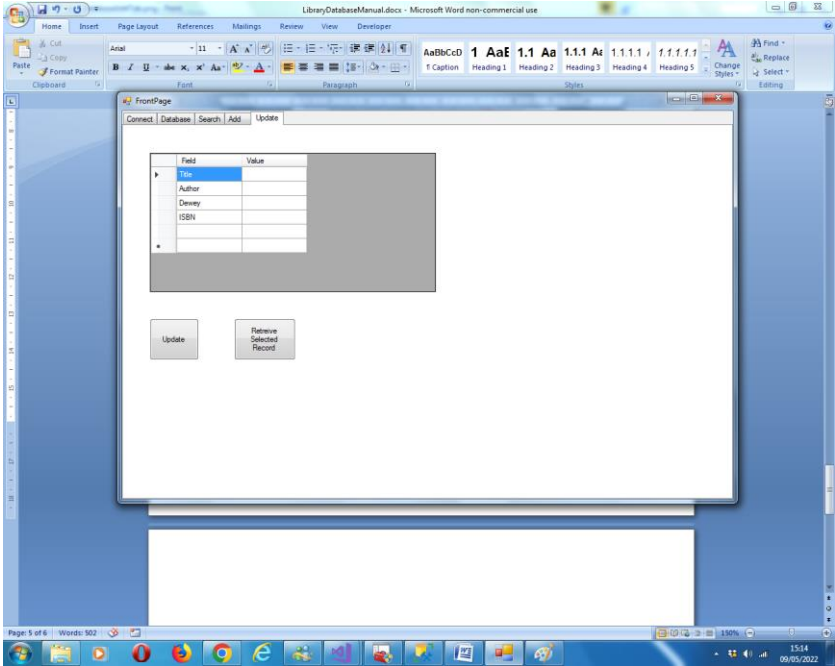
This tab allows you to search via a key word which can be from any of the database's fields (the one selected by the check box). The search itself can be of the database or from within the displayed selection. The results of the search are displayed. Items from the displayed selection may be deleted. Each record is distinguished by a unique Global Identification Number (GUID), provided on creation of the record, which it is not possible to alter. A selected record may be updated on a subsequent tab.

4.4 Add



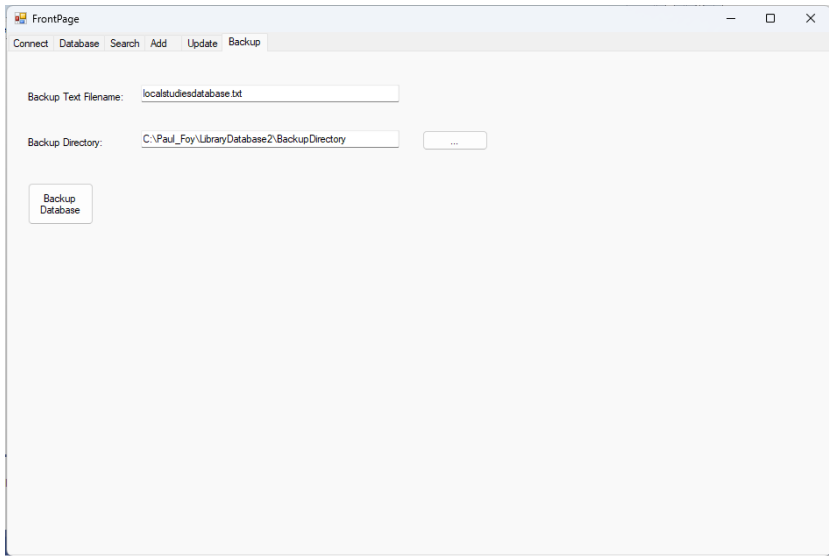
This tab allows an entry to be added to the database by provided the values of the fields. A Guid will be assigned automatically. Once a Guid has been assigned it exists for the lifetime of that record irrespective to any other alterations to the other fields.

4.5 Update



This tab allows an entry selected on the 'Search' tab to be retrieved and updated.

4.6 Backup



This tab allows the database to be backed up and restored, as a text file from the supplied archive directory. Once a database has been restored it must be loaded into this application, to retrieve the records.

Paul D. Foy
Mathematical Services Limited

October 2023