

1 Introduction

This is a manual for the installation and use of the database application 'MapCatalogue'. The program is a Windows application, for creating and searching a modestly sized catalogue of maps database, such as would be found in a small library or collection.

2 Pre-requisites.

1. A PC running Windows 7 or above.
2. A USB stick containing the program setup files, together with this manual.
3. An installation of an instance of Microsoft SQL Server.

It is particularly important to note the name of the Server for the first connection to the Server. It will also be necessary to specify a username having no password upon installing Microsoft SQL Server.

It will be necessary to ensure that Microsoft SQL Server is configured as a Windows service and that it runs automatically when the computer is turned on. Occasionally these services stop and have to be restarted before this application will work. This can be done within this application.

Databases compatible with this program can be, backed up or restored using this application.

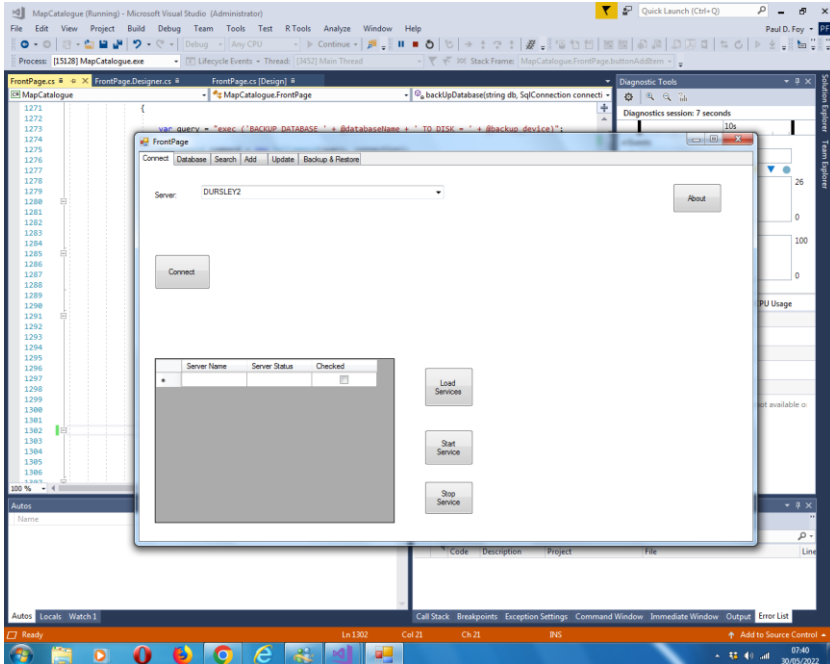
3 Installation/Removal

Insert the supplied stick into the PC and run the 'setup.exe' program. The program can be removed from the PC, by using the 'Program & Features' menu from within Control Panel.

4 Use

The application has 6 tabs:

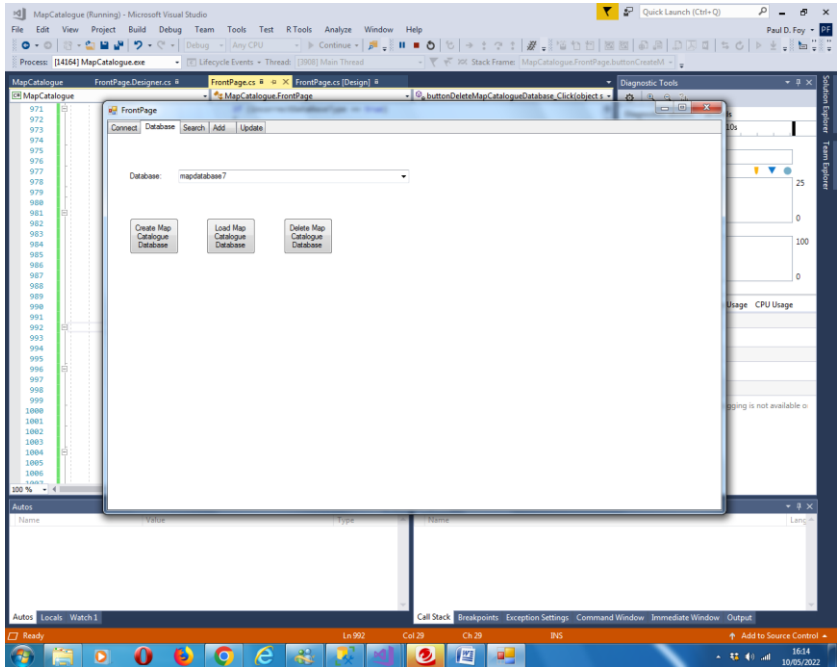
4.1 Connect



This tab allows you to select the instance of SQL Server that you are using. The last choice made is automatically presented to you. If this has not been previously chosen you may supply it, either via selecting it or typing in it's name. There is also an

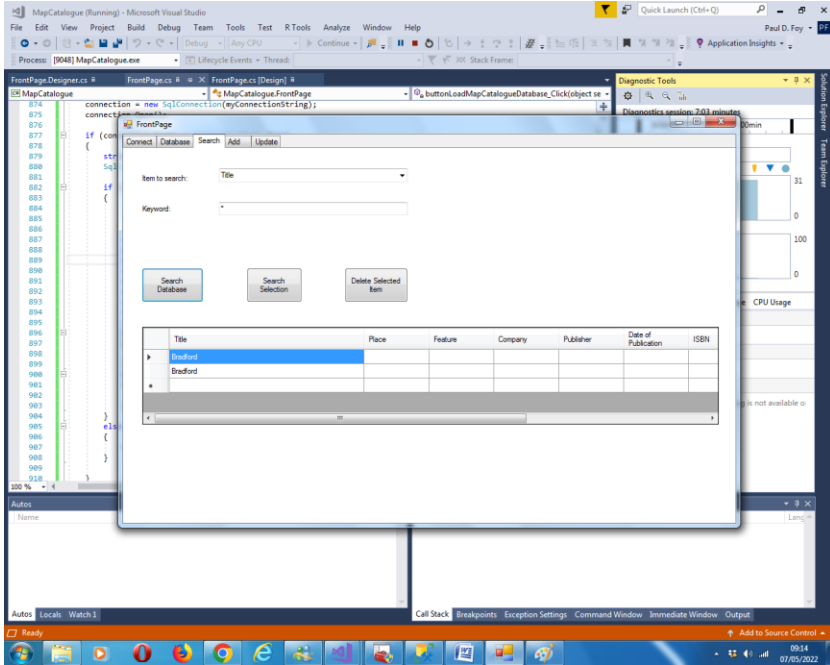
about button to provide information about the application. In addition you can view all the Microsoft SQL services running on the computer, and stop and start them.

4.2 Database



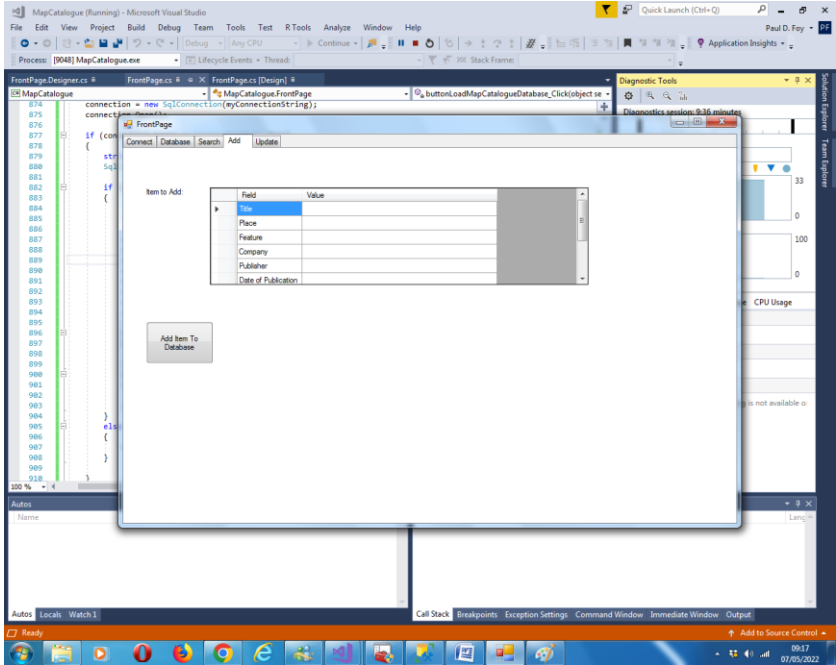
This tab allows you to either load an existing database or create a new database. In each case only a database with a structure permitted by this application is accepted. This tab also allows you to delete an existing database with a structure permitted by this application.

4.3 Search



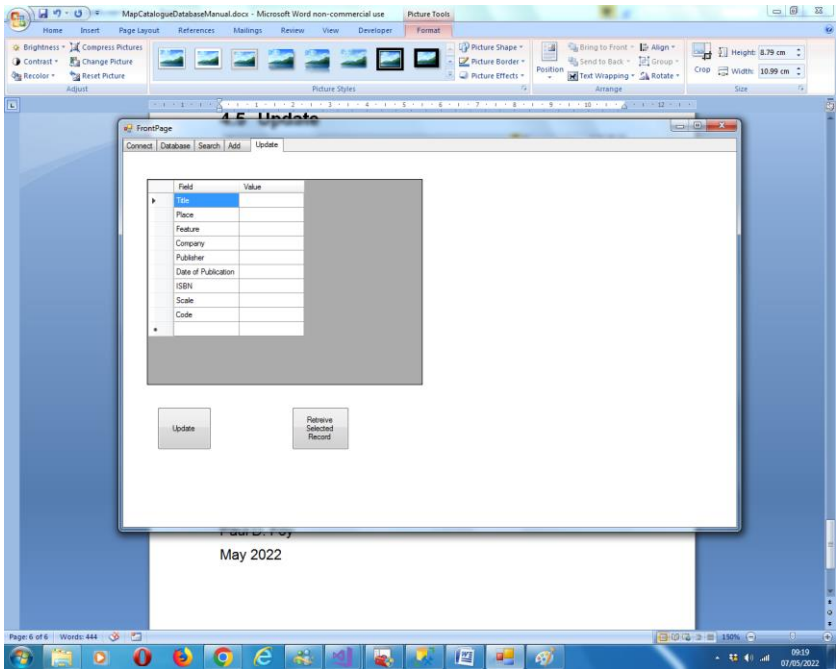
This tab allows you to search via a key word which can be either from the Title, Place, Feature, Company, Publisher, Date of Publication, ISBN number, Scale or Code. The search itself can be of the database or from within the displayed selection. The results of the search are displayed. Items from the displayed selection may be deleted. You may search for all items in the database by inserting the wildcard character “*” as a keyword.

4.4 Add



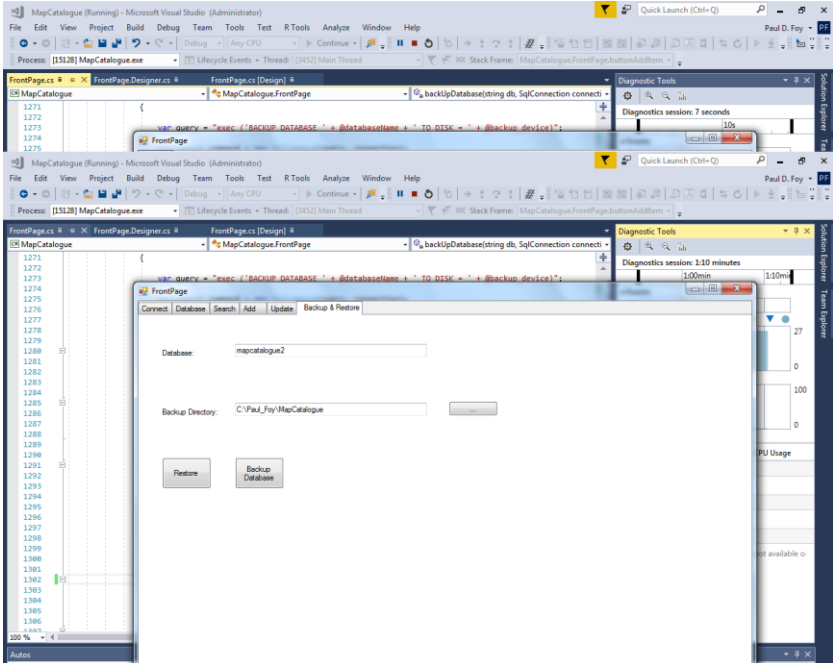
This tab allows an entry to be added to the database by provided one or more of Title, Place, Feature, Company, Publisher, Date of Publication, ISBN number, Scale or Code. It is obligatory to provide a non-empty string for Code. The value supplied for Code can not be present in another record of the database i.e. the value of Code uniquely labels the record.

4.5 Update



It is possible to retrieve a selected item and update all fields.

4.6 Backup and Restore



This tab allows you to backup and restore a database to and from the selected directory. Once a database has been restored it must be loaded to retrieve it's columns.

Paul D. Foy

Mathematical Services Limited

July 2022