

# Contents

- 1 INTRODUCTION..... 2**
- 2 PRE-REQUISITES..... 3**
- 3 INSTALLATION/REMOVAL ..... 4**
- 4 USE..... 6**
  - 4.1 SETUP ..... 6
    - 4.1.1 *Files panel*..... 6
    - 4.1.2 *Colours panel*..... 7
  - 4.2 EFFECTS ..... 8
    - 4.2.1 *Blue panel* ..... 8
    - 4.2.2 *Red panel* ..... 9

# 1 Introduction

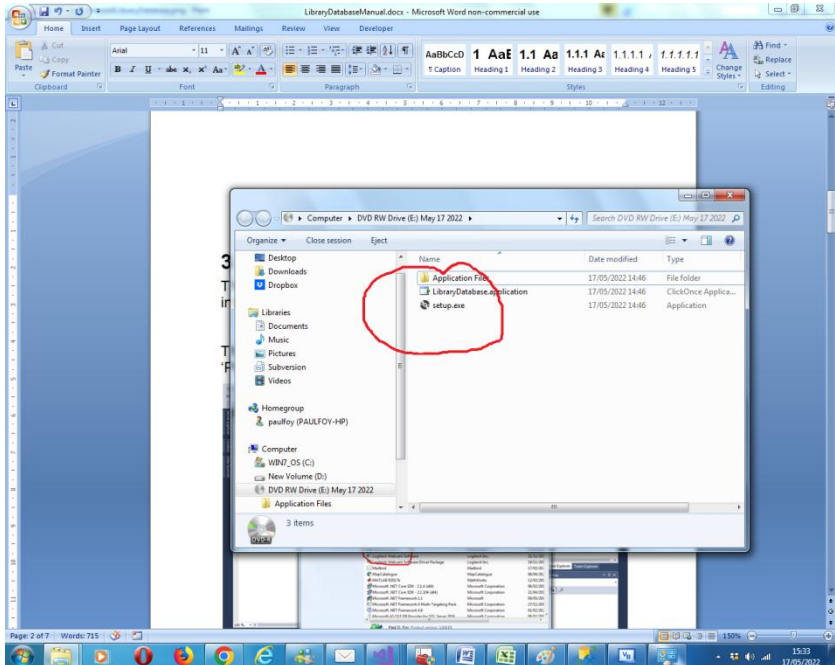
This is a manual for the installation and use of the application 'TextEffect'. The program is a Windows, Wordpad like, application, for randomly colouring a .txt document, and also doing some of the manipulations that would be associated with Wordpad, like annotating text and selected areas of text. That is a little beyond that which a simple Notepad application can do (but certainly not as comprehensive as Word itself).

## **2 Pre-requisites.**

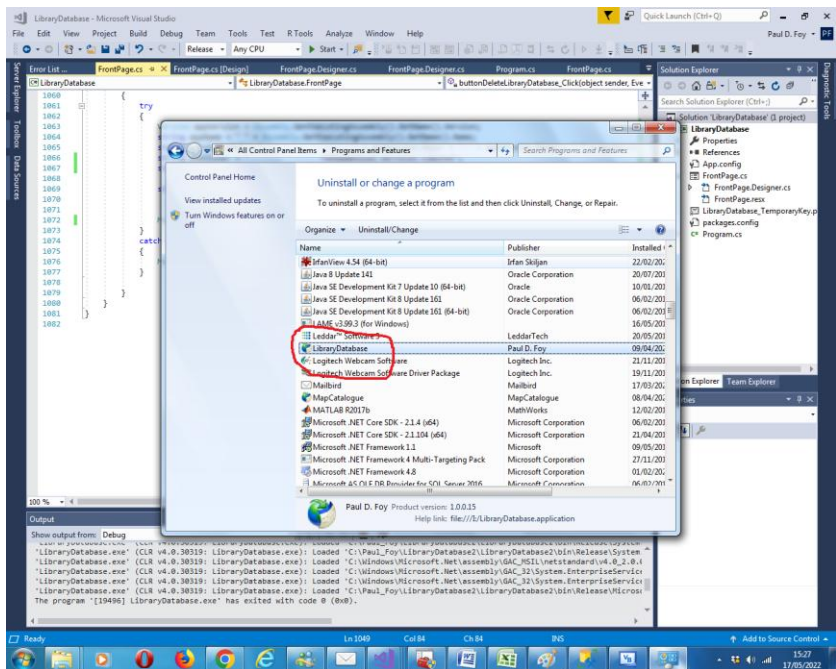
1. A PC running Windows 7 or above.
2. A USB stick or optical drive containing the program setup files, together with this manual (available online).
3. A .txt file to be converted.

### 3 Installation/Removal

The program is installed by inserting the supplied stick or disc into the PC and running the 'setup.exe' program on it.



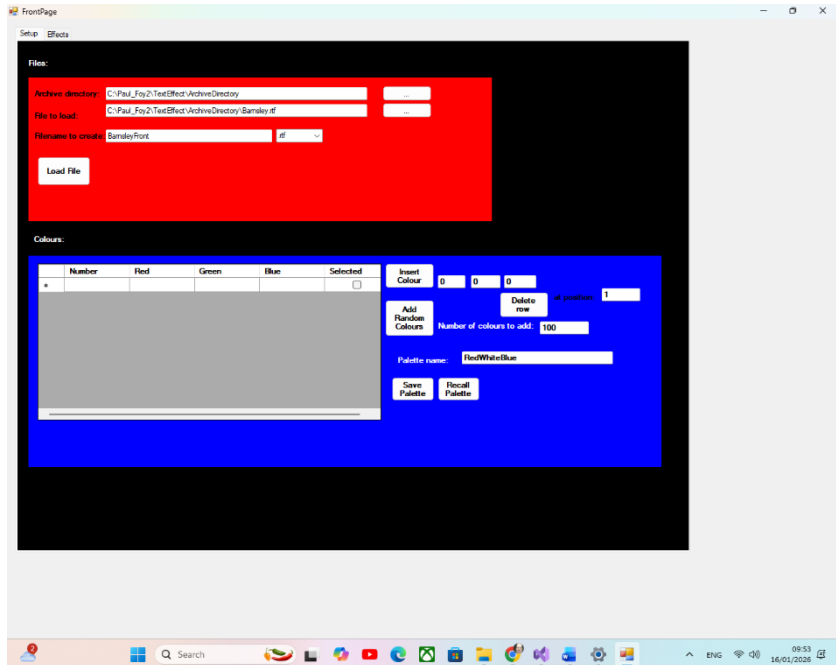
The program can be removed from the PC, by using the 'Program & Features' menu from within Control Panel.



## 4 Use

The application has 2 tabs (the first 2 tabs in the application):

### 4.1 Setup



#### 4.1.1 Files panel

The **Files** panel contains files used by the application.

**Archive directory:** the directory where all files are loaded from or saved to.

**File to load:** the file name of the .txt or .rtf file to load.

**Filename to create** this is the filename of the .txt, .rtf or .pdf file to create. The .pdf functionality is not as sophisticated as that of Word or Adobe as it involves converting the RichTextBox

control to a .bmp before using an ImageMagick library routine (<https://imagemagick.org/#gsc.tab=0>) to convert to a .pdf file.

The **Load File** button loads the file provided into the RichTextBox of the effects tab.

#### 4.1.2 Colours panel

The **Colours** panel allows you to create colours as the pallet for colours to be used.

**Add Random Colours** adds **Number of colours to add**, random colours to the flexGrid. **Insert Colour** inserts the adjacent provided colour **at position** provided. **Delete row** deletes the row **at position** provided. On providing a **Palette name**, **Save Palette** and **Recall Palette** saves and recalls the pallet for use later.

The screenshot shows the Microsoft FrontPage web editor interface. The main workspace displays a web page with a light blue background. A text box on the left contains the following text:

There are various possibilities for the origin of the name of Barnsley in South Yorkshire, UK. Most revolve around the fact that it derives from the Old English words *barne* and *leah* which can mean either 'barley' or 'barne' or 'old town' and 'clearing' or 'barndale' respectively. Indeed it would not be unusual for a barne to frequent a place growing barley as it is a favoured foodstuff.

The sidebar on the right contains several panels:

- Colour letters randomly**: A button to generate random color letters.
- Colour words randomly**: A button to generate random color words.
- Colour lines randomly**: A button to generate random color lines.
- Colour words sequentially**: A button to generate color words in sequence.
- Colour words prescriptively**: A button to generate color words based on a preset.
- Width (mm)**: A text box with the value 91 and a **Get Size** button.
- Height (mm)**: A text box with the value 61 and a **Get Size** button.
- Font**: A dropdown menu showing 'I', 'B', 'U', 'A', and 'A'.
- Size**: A dropdown menu showing '14', '16', '18', '20', '22', '24', '26', '28', '30', '32', '34', '36', '38', '40', '42', '44', '46', '48', '50', '52', '54', '56', '58', '60', '62', '64', '66', '68', '70', '72', '74', '76', '78', '80', '82', '84', '86', '88', '90', '92', '94', '96', '98', '100', '102', '104', '106', '108', '110', '112', '114', '116', '118', '120', '122', '124', '126', '128', '130', '132', '134', '136', '138', '140', '142', '144', '146', '148', '150', '152', '154', '156', '158', '160', '162', '164', '166', '168', '170', '172', '174', '176', '178', '180', '182', '184', '186', '188', '190', '192', '194', '196', '198', '200', '202', '204', '206', '208', '210', '212', '214', '216', '218', '220', '222', '224', '226', '228', '230', '232', '234', '236', '238', '240', '242', '244', '246', '248', '250', '252', '254', '256', '258', '260', '262', '264', '266', '268', '270', '272', '274', '276', '278', '280', '282', '284', '286', '288', '290', '292', '294', '296', '298', '300', '302', '304', '306', '308', '310', '312', '314', '316', '318', '320', '322', '324', '326', '328', '330', '332', '334', '336', '338', '340', '342', '344', '346', '348', '350', '352', '354', '356', '358', '360', '362', '364', '366', '368', '370', '372', '374', '376', '378', '380', '382', '384', '386', '388', '390', '392', '394', '396', '398', '400', '402', '404', '406', '408', '410', '412', '414', '416', '418', '420', '422', '424', '426', '428', '430', '432', '434', '436', '438', '440', '442', '444', '446', '448', '450', '452', '454', '456', '458', '460', '462', '464', '466', '468', '470', '472', '474', '476', '478', '480', '482', '484', '486', '488', '490', '492', '494', '496', '498', '500', '502', '504', '506', '508', '510', '512', '514', '516', '518', '520', '522', '524', '526', '528', '530', '532', '534', '536', '538', '540', '542', '544', '546', '548', '550', '552', '554', '556', '558', '560', '562', '564', '566', '568', '570', '572', '574', '576', '578', '580', '582', '584', '586', '588', '590', '592', '594', '596', '598', '600', '602', '604', '606', '608', '610', '612', '614', '616', '618', '620', '622', '624', '626', '628', '630', '632', '634', '636', '638', '640', '642', '644', '646', '648', '650', '652', '654', '656', '658', '660', '662', '664', '666', '668', '670', '672', '674', '676', '678', '680', '682', '684', '686', '688', '690', '692', '694', '696', '698', '700', '702', '704', '706', '708', '710', '712', '714', '716', '718', '720', '722', '724', '726', '728', '730', '732', '734', '736', '738', '740', '742', '744', '746', '748', '750', '752', '754', '756', '758', '760', '762', '764', '766', '768', '770', '772', '774', '776', '778', '780', '782', '784', '786', '788', '790', '792', '794', '796', '798', '800', '802', '804', '806', '808', '810', '812', '814', '816', '818', '820', '822', '824', '826', '828', '830', '832', '834', '836', '838', '840', '842', '844', '846', '848', '850', '852', '854', '856', '858', '860', '862', '864', '866', '868', '870', '872', '874', '876', '878', '880', '882', '884', '886', '888', '890', '892', '894', '896', '898', '900', '902', '904', '906', '908', '910', '912', '914', '916', '918', '920', '922', '924', '926', '928', '930', '932', '934', '936', '938', '940', '942', '944', '946', '948', '950', '952', '954', '956', '958', '960', '962', '964', '966', '968', '970', '972', '974', '976', '978', '980', '982', '984', '986', '988', '990', '992', '994', '996', '998', '1000'.
- Font**: A dropdown menu showing 'I', 'B', 'U', 'A', and 'A'.
- Size**: A dropdown menu showing '14', '16', '18', '20', '22', '24', '26', '28', '30', '32', '34', '36', '38', '40', '42', '44', '46', '48', '50', '52', '54', '56', '58', '60', '62', '64', '66', '68', '70', '72', '74', '76', '78', '80', '82', '84', '86', '88', '90', '92', '94', '96', '98', '100', '102', '104', '106', '108', '110', '112', '114', '116', '118', '120', '122', '124', '126', '128', '130', '132', '134', '136', '138', '140', '142', '144', '146', '148', '150', '152', '154', '156', '158', '160', '162', '164', '166', '168', '170', '172', '174', '176', '178', '180', '182', '184', '186', '188', '190', '192', '194', '196', '198', '200', '202', '204', '206', '208', '210', '212', '214', '216', '218', '220', '222', '224', '226', '228', '230', '232', '234', '236', '238', '240', '242', '244', '246', '248', '250', '252', '254', '256', '258', '260', '262', '264', '266', '268', '270', '272', '274', '276', '278', '280', '282', '284', '286', '288', '290', '292', '294', '296', '298', '300', '302', '304', '306', '308', '310', '312', '314', '316', '318', '320', '322', '324', '326', '328', '330', '332', '334', '336', '338', '340', '342', '344', '346', '348', '350', '352', '354', '356', '358', '360', '362', '364', '366', '368', '370', '372', '374', '376', '378', '380', '382', '384', '386', '388', '390', '392', '394', '396', '398', '400', '402', '404', '406', '408', '410', '412', '414', '416', '418', '420', '422', '424', '426', '428', '430', '432', '434', '436', '438', '440', '442', '444', '446', '448', '450', '452', '454', '456', '458', '460', '462', '464', '466', '468', '470', '472', '474', '476', '478', '480', '482', '484', '486', '488', '490', '492', '494', '496', '498', '500', '502', '504', '506', '508', '510

**Colour words randomly** colour the words of the contents of the richTextBox randomly.

**Colour lines randomly** colour the lines of the contents of the richTextBox randomly.

8



### 4.2.2 Red panel

This panel allows one to do Wordpad like annotations to the text of the adjacent richTextBox control. In addition it is possible to specify **Top**, **Bottom**, **Left** and **Right** margins (in mms) for the word wrap in the working area. This is via the **Set margins** button. Any resize of the working area automatically alters the margins present. The default margin size is 4mm.

The **Width** and **Height** of the editable area can be changed with the **Set Size** button.

Selected areas of text can be toggled between **Italic**, **Bold**, **Underline** or **Strikethrough** with those buttons. The background colour can be changed with the **A** button. The **Font** and **Colour** of selected areas of text can be changed with those buttons. Subscripts and superscripts can be added to a selected area using the **Sub** and **Sup** buttons respectively. The horizontal alignment of the current paragraph can be changed with the **H. Alignment** button. The choices are left justified (the default), centred or right justified. The offset (in mm) to the first line of the paragraph is set with the **Offset** button. The line spacing (in twips) is set with the **Line spacing** button.

With all these buttons if a selection is not made then the change is made to the whole document.

The **Save To File** button saves the editable area to the file specified in the Setup tab.

Changes made (apart from those made with the buttons on the blue panel) can be undo or redone with the **Undo** and **Redo** buttons respectively.

Paul D. Foy  
Mathematical Services

January 2026