

# 1 Introduction

This is a manual for the installation and use of the Version Control manager 'VersionController'. The program is currently a very simple Windows application, for maintaining a traceable record of a file(s) that is undergoing changes, such as typically occurs in software development.

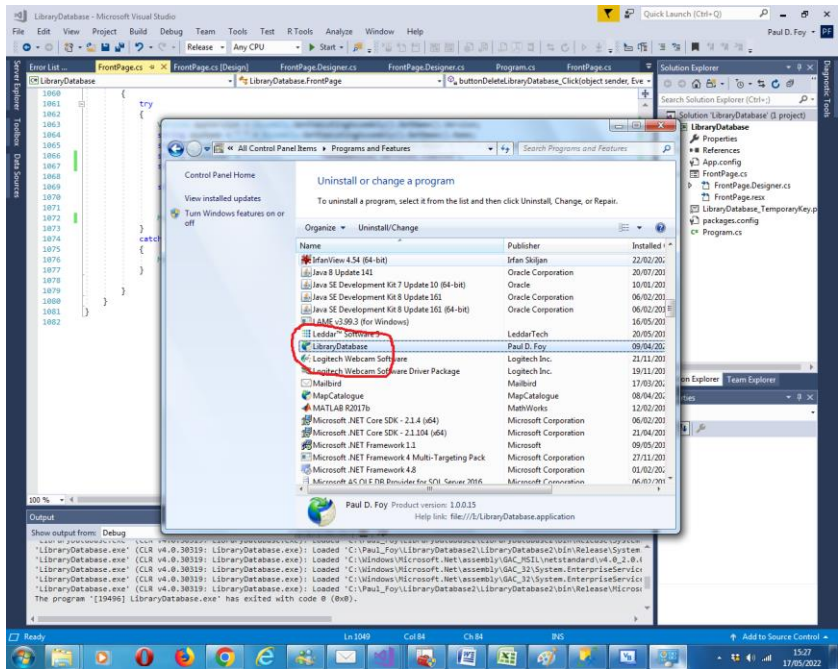
## 2 Pre-requisites.

1. A PC running Windows 7 or above.
2. The setup files of the program (available online), or via USB disc at request.

## 3 Installation/Removal

The program is installed by running the 'setup.exe' program.

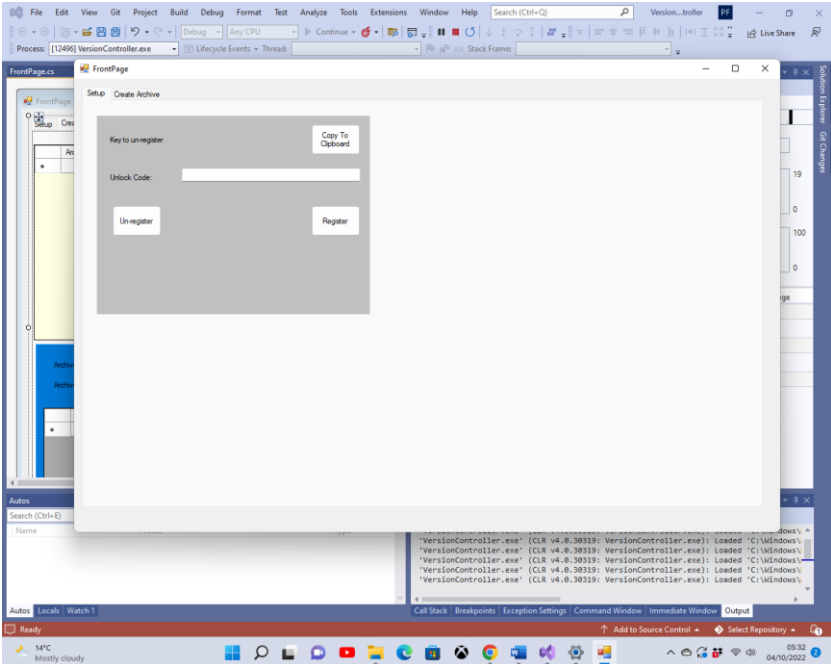
The program can be removed from the PC, by using the 'Program & Features' menu from within Control Panel.



# 4 Use

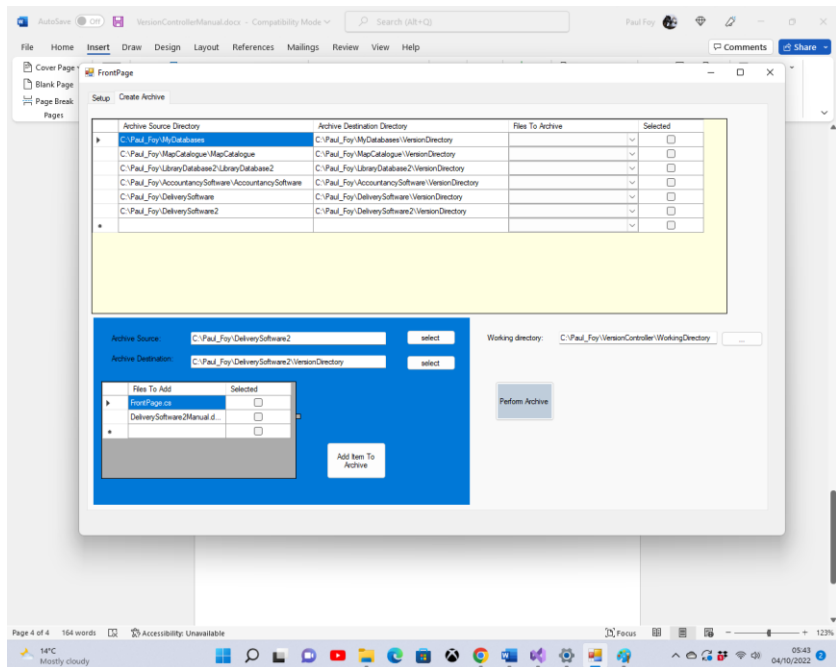
The application currently has 2 tabs:

## 4.1 Setup



The software must first be registered. The un-lock key provided on start-up is sent to 'paulfoy@mathematicalservices.co.uk'. A code will be returned which is pasted into the text box, before hitting the **Register** button. The application can also be un-registered by hitting the **Un-register** button.

## 4.2 Create Archive



The flex-grid across the top contains the details of the various archives under version control. Each line (from left to right) contains:

1. The source of the files to be versioned.
2. The destination of the repository.
3. The files under version control in the repository.
4. Whether this archive has been selected or not.

A file '*filename.filetype*' that is under version control has its revisions labelled '*filename\_1.filetype*', '*filename\_2.filetype*' etc.

The bottom left flex grid allows an archive, to be version controlled, to be added by specifying items 1, 2 and 3 above. All

files in this flex-grid must belong to the same source directory with the intention to archive them in the same archive directory.

A version update of a selected archive may be made using the **Perform Archive** button. In this case all items in the combo box of the upper flex-grid are updated.

The information in the two flex-grids may be saved, to be recalled on start-up automatically, by supplying a working directory. If this working director is not provided, this data will be lost.

Paul D. Foy  
Mathematical Services Limited

October 2022